



Newsletter

June 2015

Volume 41

CLS Students' Achievements

Congratulations to **Pitch Wisantavong**!
He is in TOEFL preparation course
and we are proud to announce that he **Scored 75**
in the last TOEFL iBT test. We wish him
all the best on his future educational goals!

Tuition Increase

Dear CLS Students,
We are increasing our tuition as of July 1st, 2015.
The following program tuition fees apply:

4 Weeks = \$400
12 Weeks / 3 months = \$1,100
24 Weeks / 6 months = \$2,200

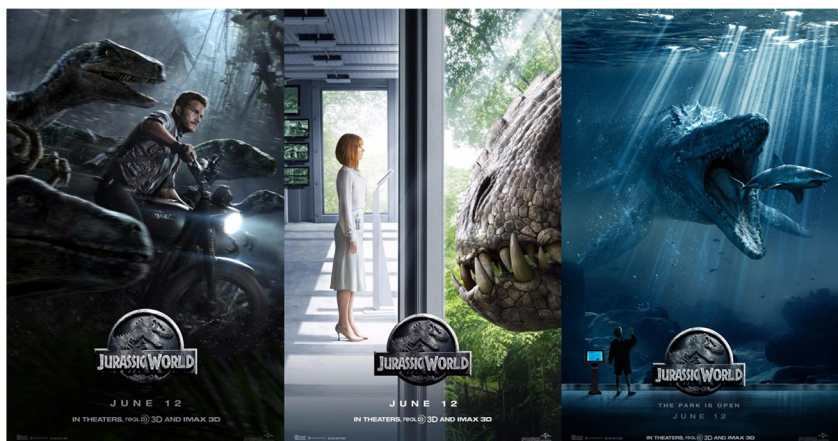
California Language School
639 S New Hampshire Ave.,
Suite #300, Los Angeles, CA 90005
Tel: (213)387-0007

Jurassic World

Movie of the Month

Located off the coast of Costa Rica, the Jurassic World luxury resort provides a habitat for an array of genetically engineered dinosaurs, including the vicious and intelligent Indominus rex. When the massive creature escapes, it sets off a chain reaction that causes the other dinos to run amok. Now, it's up to a former military man and animal expert to use his special skills to save two young boys and the rest of the guests from an all-out, prehistoric assault.

(Google Review)



Fun Places To Eat In LA

When you visit Los Angeles, you might be surprised with so many varieties and choices for lunch or dinner. So, here are a few of the best restaurants in LA (source: laweekly.com):

Bestia

Bestia remains one of L.A.'s few true perennial hot spots. Two years in, the restaurant is still thrilling trend seekers and serious food nerds alike. The winning formula, concocted by restaurateur Bill Chait and chefs Ori Menashe and Genevieve Gergis, consists of an industrial-chic space in the bottom of a loft building on the edge of the Arts District, aggressively cheffy Italian cooking. www.bestiala.com



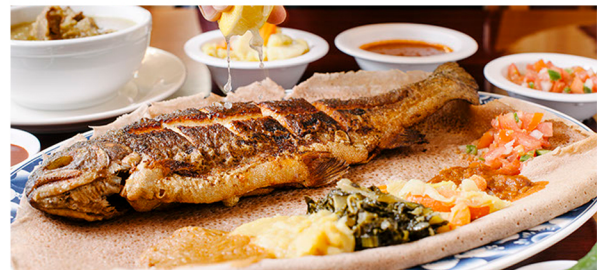
Tar & Roses

A serving of Jerusalem artichokes seems almost ludicrously generous in nature, dotted with goat cheese and showered with hazelnuts. Crostini with sardines and lush avocado comes topped with fistfuls of cilantro and pickled onion for tang. Risks are taken, meats that other chefs have forsaken are prized and elevated here. In the restaurant's two-year journey, it has become one of the most interesting, reliable and often thrilling places to eat in Santa Monica. www.tarandroses.com



Buna Ethiopian Market

Buna Ethiopian Market prepares stews that border on life-changing, made from the likes of spiced lentils, collard greens and juicy cubes of sauteed beef, each spooned onto a canvas of soft, sour injera bread. For the bravest diners, a wild, mineral-sharp mixture of raw liver and tripe, seasoned into submission with diced jalapeño and cardamom. www.bunaethiopianmarket.com



For the complete list of 99 restaurants, visit the link on our Facebook page: www.facebook.com/californialanguageschool

A reminder on the ATTENDANCE POLICY as follows:

Attendance Policy

- Make sure you scan in and out with your student ID every time you report to school and leave the school. If you do NOT scan, you will not receive any credit for that day.
- Mandatory hours of attendance per week is 16 hours or four (4) days/week. We check every two (2) weeks on your attendance record.

Tardy Policy

- Three (3) tardy equals (1) one absence.
- If you are late more than 10 minutes into the class hour, it is a tardy.

Leaving Early

- If you leave early from class earlier than 10 minutes prior to the finishing time, it is a tardy, also. This is called an early departure and it's equivalent to the tardy policy.

Make-Up Policy

- You can ONLY make up ONCE in each quarter.
- If we do not hear from you in 10 days consecutively, your student status will be automatically terminated.

Attendance Probation Policy

- If you fail to maintain 80% or (4 days/week) will be placed on a two-week attendance probation.
- First warning - Verbal,
Second warning - Written
FINAL NOTICE: Your status with (Student Exchange Visitor's Program) SEVP - Termination (Cancellation)